

# Nordic Noir

---

The setting



# Table of contents

**01**

## **Cold winters**

---

The Snowman

**02**

## **Bright summers**

---

The Island





# 01

# Cold Winters

---

With focus on „The Snowman“ by Jo Nesbø





# Nature

---

- Mountains
- Snow over everything
- Forrests
- Frozen lakes
- Glaciers
- Raw

The background is a stylized winter landscape. It features snow-covered mountains in shades of light blue and white. In the foreground, there are several bare, dark trees with intricate branch structures. The sky is a pale blue with soft, white clouds and small, light blue specks scattered throughout, suggesting a misty or snowy atmosphere. The overall color palette is cool and monochromatic, dominated by blues and whites.

# Weather

---

- Cold
- Snow
- Darkness
- Storms
- Avalanches

# The Snowman



## Reflection

The weather is often described and mirrors what is happening in the book



## Weather and scence

There is bad weather and darkness in suspensful scenes, not in calm ones

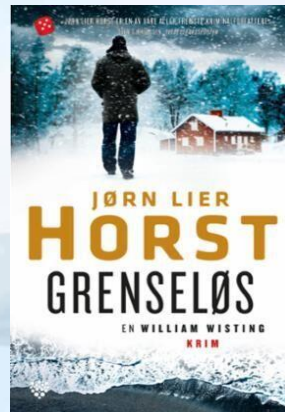
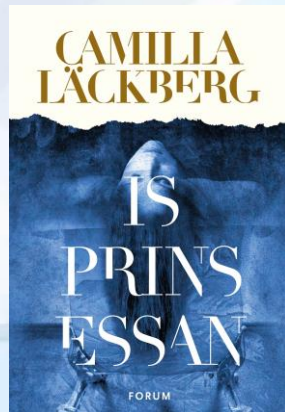
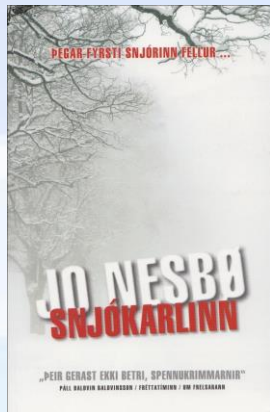
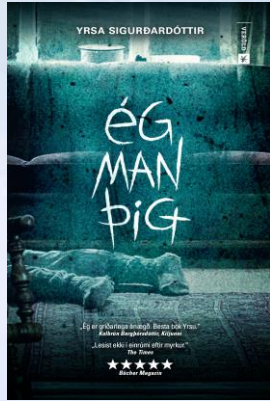


## Weather and people

Both the characters and their speech are affected by the dark and cold.

# Covers of crime novels

# and TV





A watercolor-style landscape illustration. The background features a range of mountains in shades of light blue and teal, with a prominent peak on the left. In the foreground, there are rolling green hills and a line of dark green trees. The bottom of the image shows a light yellowish-green field. The overall style is soft and artistic.

# 02

## Bright summers

---

With focus on „The Island“ by Ragnar Jónasson





# Nature

---

- Green
- Flowers
- Mountains
- Raw



# Weather

---

- Midnight sun
- Wind
- Cloudy
- Still cold

# The Island



## Isolation

Happens on an island so it is easier for the characters to commit a crime



## Weather and science

Sun and dry weather does not affect the suspense of the scenes



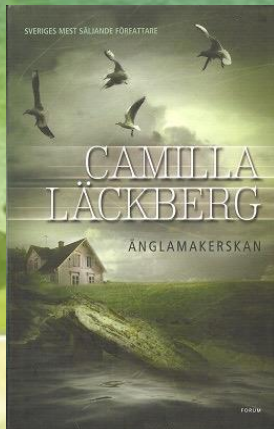
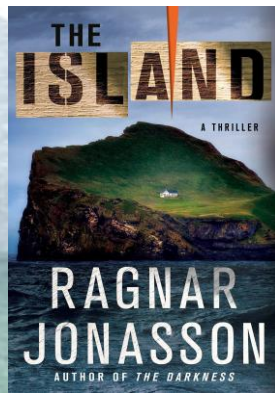
## Bright all day

The midnight sun makes it hard to hide crimes



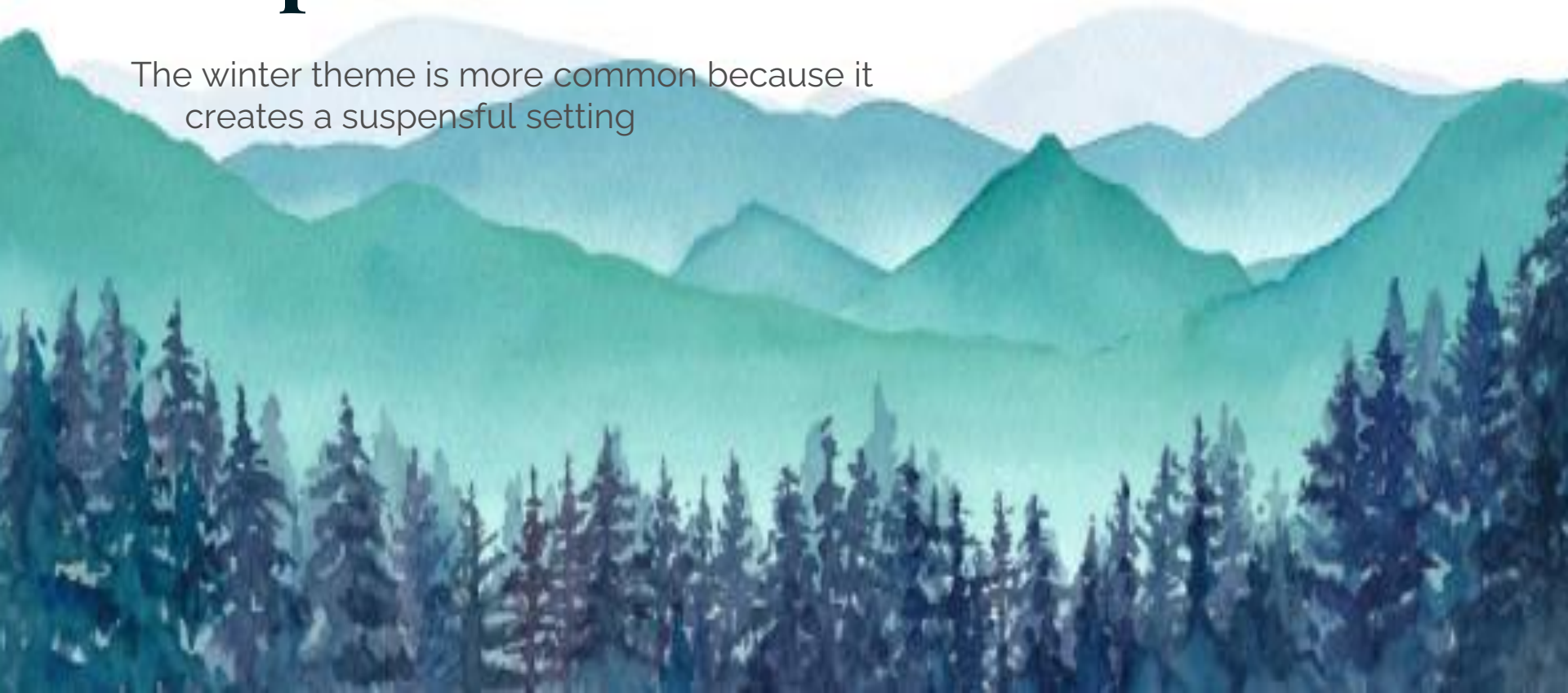
# Covers of crime novels

# and TV



# comparison

The winter theme is more common because it creates a suspenseful setting





# Other factors



## Animals

Animals highlight the brutal setting especially in scenes where they are slaughtered



## Supernatural beings

Ghosts create more fear in the already dark and cold surroundings



**Thanks for listening**  
**Takk for oppmerksomheten**  
**Takk fyrir að hlusta**



Álfrún Lind, Eva Margrét, Kristine og Oda